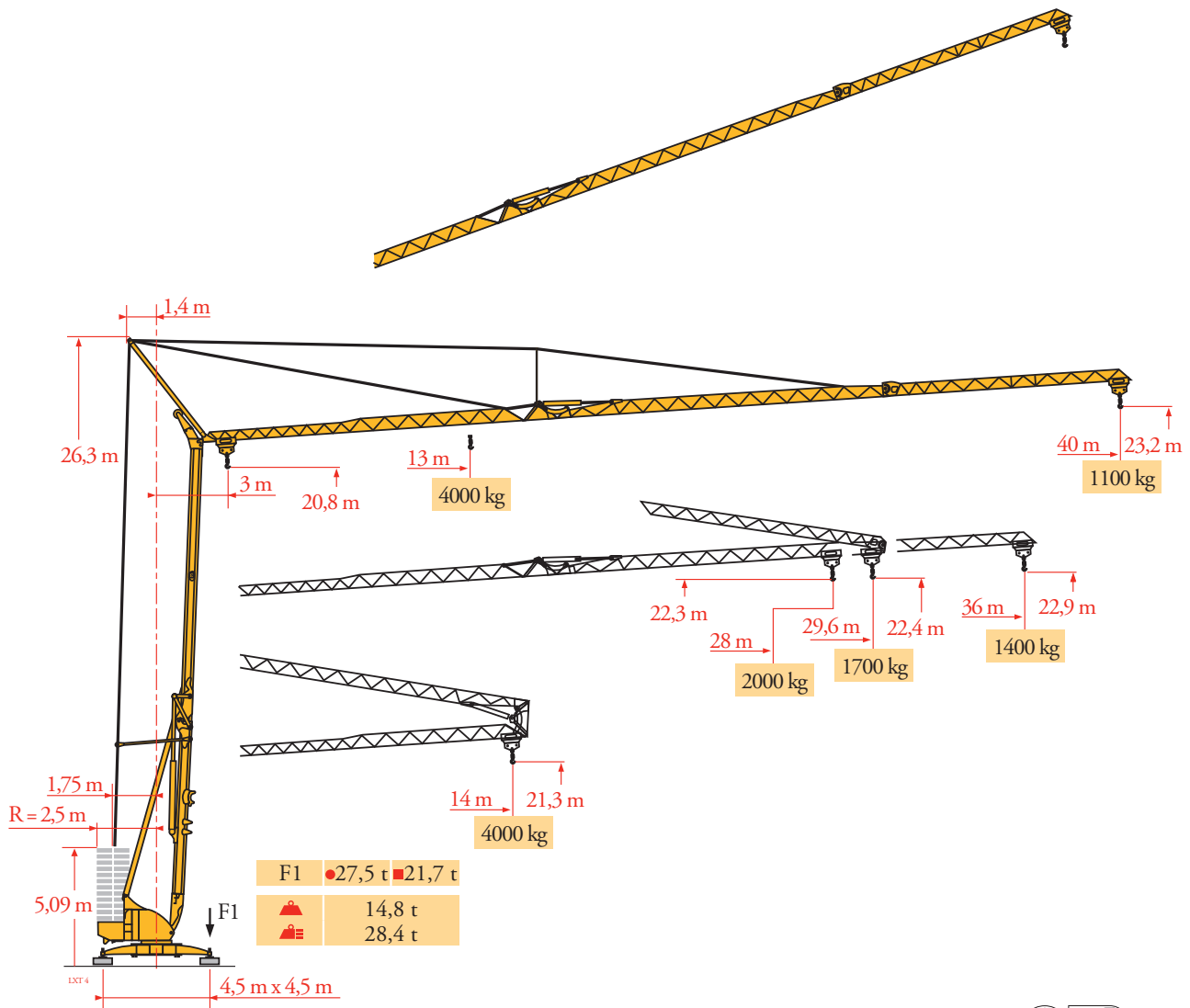
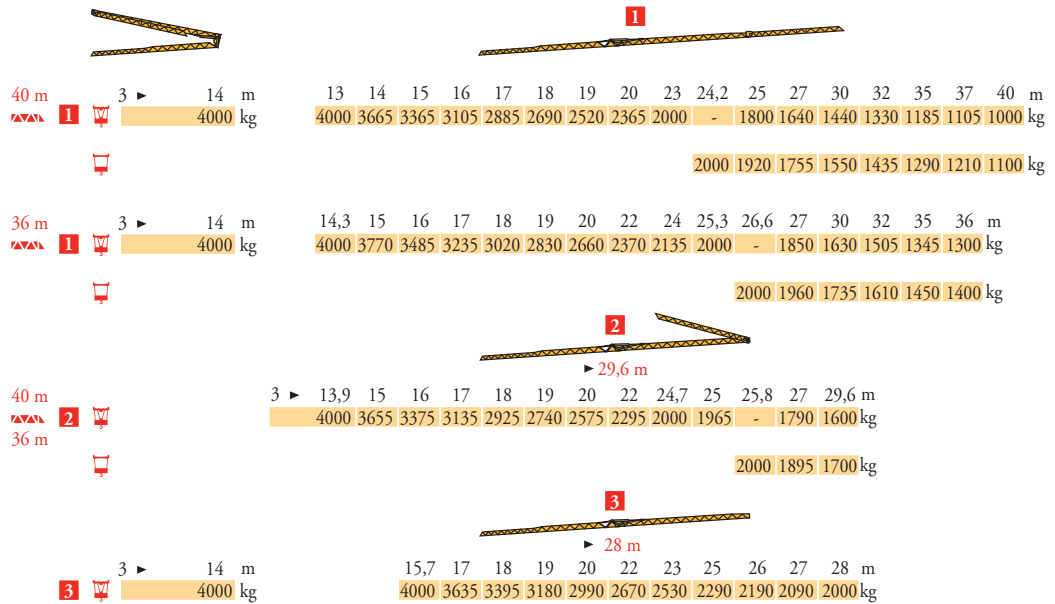


Potain Igo 50



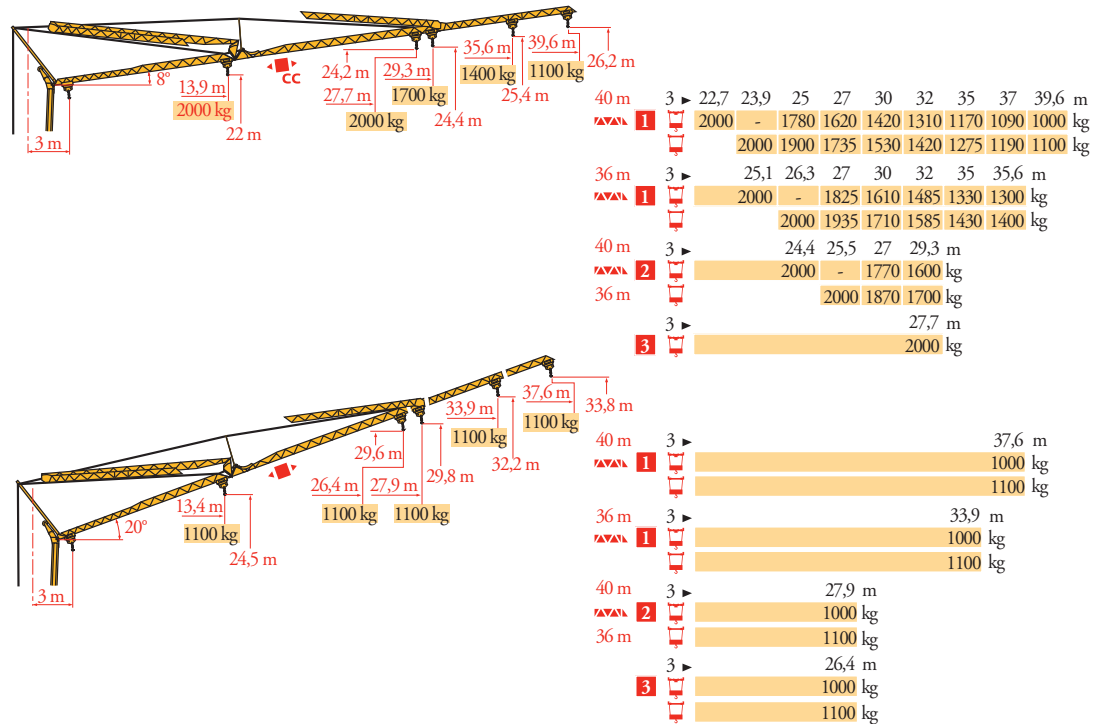
Courbes de charges
Lastkurven
Load diagrams
Curvas de cargas
Curve di carico
Curva de cargas
Диаграммы
грузоподъемностей

LXT 4



Flèche relevée
Ausleger in
Steilstellung
Luffing jib
Flecha izada
Braccio impennato
Lança inclinada
Маховая стрела

LXT 5



FR

Chariot distributeur
Chariot distributeur et
courbes de charges
Réactions en service
Réactions hors service



DE

Verfahrbare Laufkatze
Verfahrbare Laufkatze und
Lastkurven
Reaktionskräfte in Betrieb
Reaktionskräfte außer
Betrieb



EN

Traversing trolley
Traversing trolley and load
diagrams
Reactions in service
Reactions out of service

ES

Carro distribuidor
Carro distribuidor y curvas
de cargas
Reacciones en servicio
Reacciones fuera de servicio

IT

Carrellino distributore
Carrellino distributore e
curve di carico
Reazioni in servizio
Reazioni fuori servizio

PT

Carro distribuidor
Carro distribuidor e curva de
cargas
Reacções em serviço
Reacções fora de serviço

RU

Грузовая тележка
Грузовая тележка и диаграммы
грузоподъемностей
Реакции при работе
Реакции в покое
Вес без груза, балласта (или
транспортных осей),
с максимальной длиной стрелы и
максимальной высотой

Poids total du lest

Ballast-Gesamtgewicht.

Gross ballast weight.

Peso total del lastre.








Peso totale della zavorra.

Peso total do lastro.

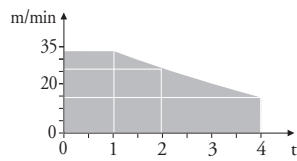
общий вес груза

Mécanismes
Antriebe
Mechanisms
Meccanismi
Mecanismos
Механизмы

LXT5

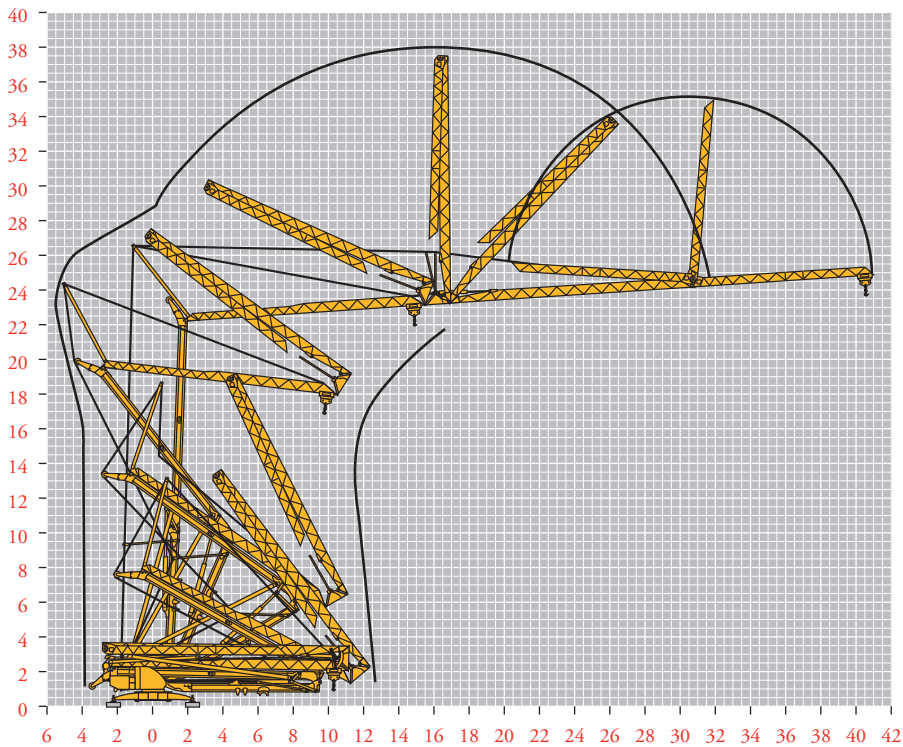
													ch - PS hp	kW			
	15 LVF 10 Optima	m/min	3,6	18	30	49	66						15	11			
		kg	2000	2000	2000	1100	500										
		m/min	3,6	18	30	54	66	1,8	8,9	15	27	33					
		kg	2000	2000	2000	1000	500	4000	4000	4000	2000	1000					
	3 DVF5	m/min	19 - 45 (0 → 1000 kg) - 19 - 41 (1000 → 4000 kg)										3	2,2			
	RVF+ 51	°/min U/min rpm	0 → 0,8										5,5	4			
																	
400 V(+10% -10%) 50 Hz 480 V(+ 6% -10%) 60 Hz						15 LVF 10 : 23 kVA											




15 LVF 10
Optima



Montage
Montage
Erection
Montaje
Montaggio
Montagem
Монтаж

LXT3




FR
 Levage

 Distribution

 Orientation

DE
 Heben
 Katzfahren
 Schwenken

EN
 Hoisting
 Trolleying
 Slewing

ES
 Elevación
 Distribución
 Orientación

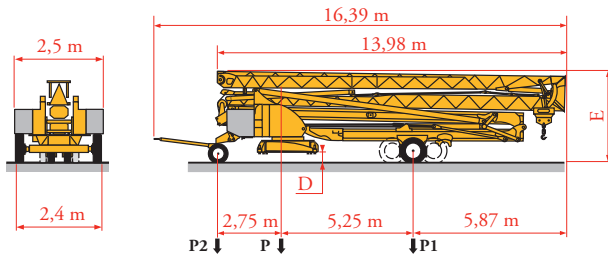
IT
 Sollevamento
 Dtribuzione
 Rotazione

PT
 Elevação
 Distribuição
 Rotação

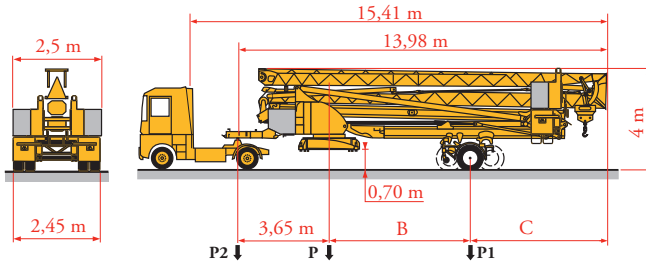
RU
 Подъем
 Перемещение каретки
 Поворот

Transport
Transport
Transport
Transporte
Trasporto
Transporte
Транспортировка

LXT7



	Km/h	D (m)	E (m)	P (kg)	P1 (kg)	P2 (kg)
DJ100/S120	10	0,20/0,35	3,42/3,57	21655	11725	9930
DJ105/S125	25	0,20/0,35	3,42/3,57	21945	11945	10000
... **						



	Km/h	B (m)	C (m)	P (kg)	P1 (kg)	P2 (kg)
SL121/J135	25	5,88	5,24	22495	13000	9495
SL122/J215M	80	4,93	6,19	23650	15400	8250
... **						

FR



Transport grue
toute lestée.

**

Voir documentations
techniques.

DE

Krantransport mit voller
Ballastierung.

Siehe technische
Dokumentation.

EN

Transport of crane with
full ballast.

See technical
documentations.

ES

Transporte grúa
completamente lastrada.

Consulte la
documentación técnica.

IT

Trasporto con gru
completamente
zavorrata.
Vedere la documen-
tazione tecnica.

PT

Transporte de grua
totalmente balastrada.

Consultar documen-
tações técnicas.

RU

Перевозка крана с
полным балластом

см. техническую
документацию



Document commercial
non contractuel. Pour
toute information
technique se référer à la
notice correspondante.

Unverbindliches
Vertriebsdokument. Für
technische Informationen,
siehe die entsprechenden
Anweisungen.

This commercial document
is not legally binding. For
any technical information,
please refer to the
corresponding instructions.

Documento comercial
no contractual. Para
cualquier información
técnica, ver la noticia
correspondiente.

Documento commerciale
non vincolante, per tutte
le informazioni tecniche
fare riferimento al
catalogo istruzioni.

Documento comercial não
contratual. Para qualquer
informação técnica
complementar consultar
as respectivas instruções.

Этот коммерческий документ
не является юридически
обязательным. Для получения
технической информации, см.
соответствующие инструкции.

Manitowoc

Manitowoc - Americas - World Headquarters
2400 S. 44th Street • Manitowoc • WI 54220 USA
Tel: +1 920 684 4410 • Fax: +1 920 652 9778

Manitowoc - Europe, Middle East & Africa
Ecully, France
18, rue de Charbonnières B.P. 173 • 69132 ECULLY Cedex • FRANCE
Tel: +33 (0)4 72 18 20 20 • Fax: +33 (0)4 72 18 20 00

Manitowoc - Asia Pacific
16F Xu Hui Yuan Building,
1089 Zhongshan No.2 Road (S) • Shanghai 200030 China
Tel: +86 21 6457 0066 • Fax: +86 21 6457 4955

REF. 200348 LXT10