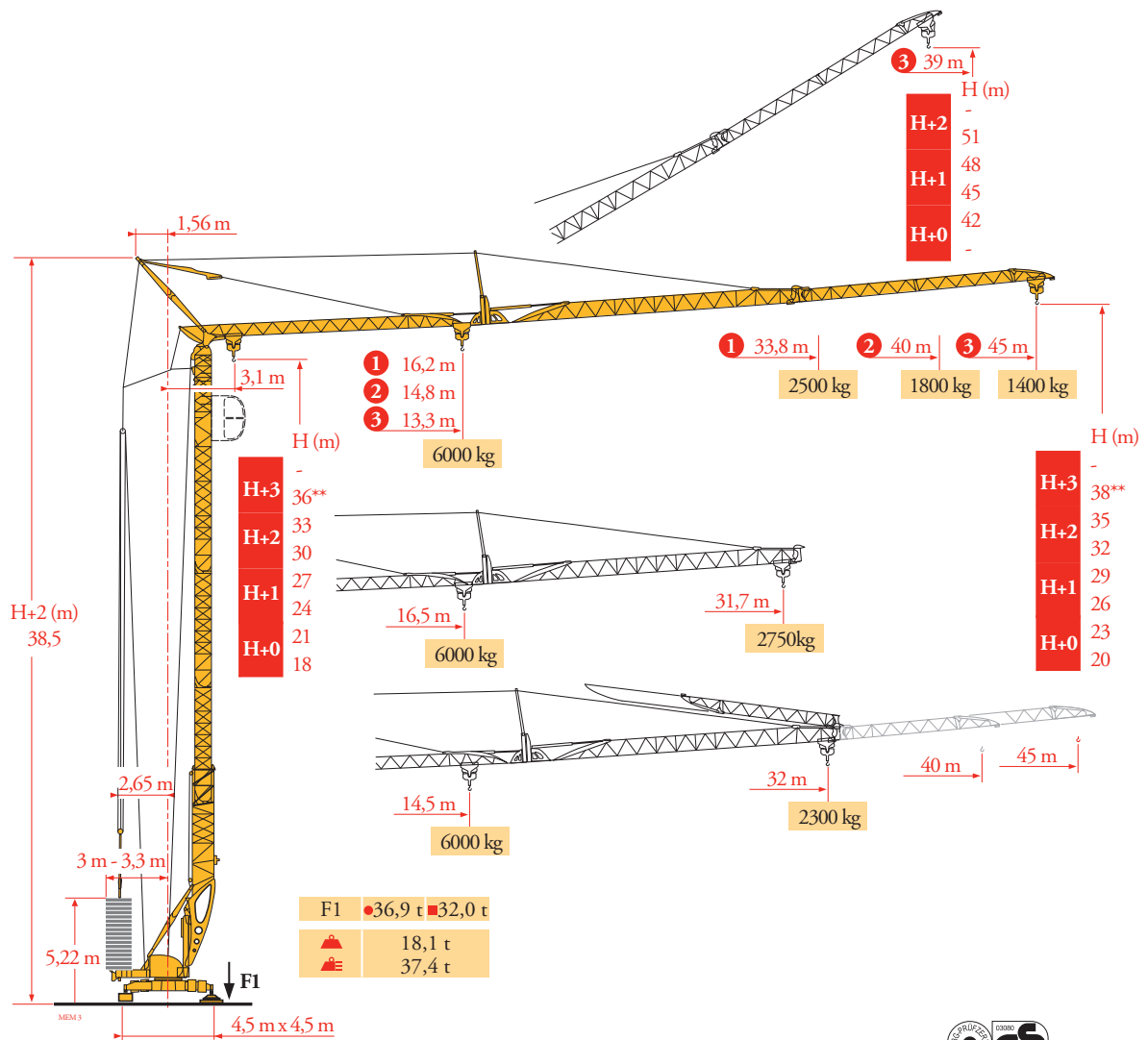


Potain Igo T 85 A



Courbes de charges
Lastkurven
Load diagrams
Curvas de cargas
Curve di carico
Curva de cargas
Диаграммы грузоподъемностей

MEM 3

45 m	3,1 ▶	12,7	14	16	18	20	22,4	23,7	26	28	30	32	34	36	38	40	42	45	m
		6000	5330	4520	3915	3445	3000	2800	2500	2285	2100	1935	1795	1670	1555	1460	1370	1250	kg
							3000	2800	2500	2285	2100	1935	1795	1670	1555	1460	1370	1250	kg
								3000	2700	2450	2250	2100	1950	1850	1700	1600	1500	1400	kg

40 m	3,1 ▶	13,9	16	18	20	22	24,6	26	28	30	32	34	36	38	40	m
		6000	5045	4375	3850	3430	3000	2805	2565	2355	2180	2020	1885	1760	1650	kg
							3000	2805	2565	2355	2180	2020	1885	1760	1650	kg
								3000	2750	2550	2350	2200	2050	1900	1800	kg



33,8 m	3,1 ▶	15,4	18	20	22	24	26	27,6	29	32	33,8	m
		6000	4995	4405	3930	3545	3220	3000	2830	2510	2350	kg
								3000	2830	2510	2350	kg
									3000	2650	2500	kg

Flèche relevée
Ausleger in Steilstellung
Luffing jib
Flecha izada
Braccio impennato
Lança inclinada
Маховая стрела

MEM 4

32 m	3,1 ▶	13,7	15	16	18	20	22	24,3	25,5	28	30	32	m
		6000	5390	4985	4320	3805	3390	3000	2835	2530	2325	2150	kg
								3000	2835	2530	2325	2150	kg
									3000	2700	2500	2300	kg

45 m	▶ 19,5	21,2	22	24	26	28	30	32	34	36	38	39	m	
		3000	2715	2595	2325	2105	1920	1760	1620	1500	1390	1295	1250	kg
			3000	2850	2600	2350	2150	1950	1800	1650	1550	1450	1400	kg

40 m	▶ 21,5	22,9	24	26	28	30	32	34,8	m	
		3000	2775	2625	2375	2170	1990	1835	1650	kg
			3000	2850	2550	2350	2150	2000	1800	kg

33,8 m	▶ 24	25,2	26	28	29,3	m	
		3000	2820	2720	2485	2350	kg
			3000	2900	2650	2500	kg

31,7 m	▶ 24,5	25,7	26	27,6	m	
		3000	2835	2795	2600	kg
			3000	2950	2750	kg

31,7 m	▶ 21	22	24	26	27,6	m	
		3000	2845	2555	2315	2150	kg
			3000	2750	2500	2300	kg

MEM (m)	45	40	33,8	31,7
H+2	-	-	-	-
H+1	51	48,5	45,4	44,4
H+0	48	45,5	42,4	41,4
	45	42,5	39,4	38,4
	42	39,5	36,4	35,4
	-	-	-	-

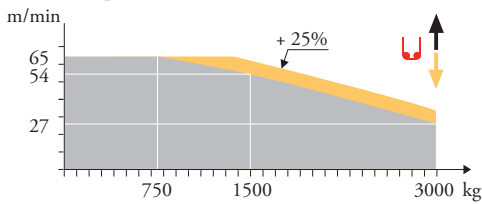
- FR** Réactions en service / Réactions hors service / A vide sans lest (ni train de transport) avec flèche et hauteur maximum. / Poids total du lest
- DE** Reaktionskräfte in Betrieb / Reaktionskräfte außer Betrieb / Ohne Last, Ballast (und Transportachse), mit Maximalausleger und Maximalhöhe. / Ballast-Gesamtgewicht.
- EN** Reactions in service / Reactions out of service / Without load, ballast (and transport axes), with maximum jib and maximum height. / Gross ballast weight.
- ES** Reacciones en servicio / Reacciones fuera de servicio / Sin carga, sin lastre, (ni tren de transporte), flecha y altura máxima. / Peso total del lastre.
- IT** Reazioni in servizio / Reazioni fuori servizio / A vuoto, senza zavorra (ne assali di trasporto) con braccio massimo e altezza massima. / Peso totale della zavorra.
- PT** Reacções em serviço / Reacções fora de serviço / Sem carga (nem trem de transporte)- sem lastro com lança e altura máximas. / Peso total do lastro.
- RU** Реакции при работе / Реакции в покое / Вес без груза, балласта (или транспортных осей), с максимальной длиной стрелы и максимальной высотой. / общий вес груза

Mécanismes
Antriebe
Mechanisms
Mecanismos
Meccanismi
Mecanismos
Механизмы

MEM 3

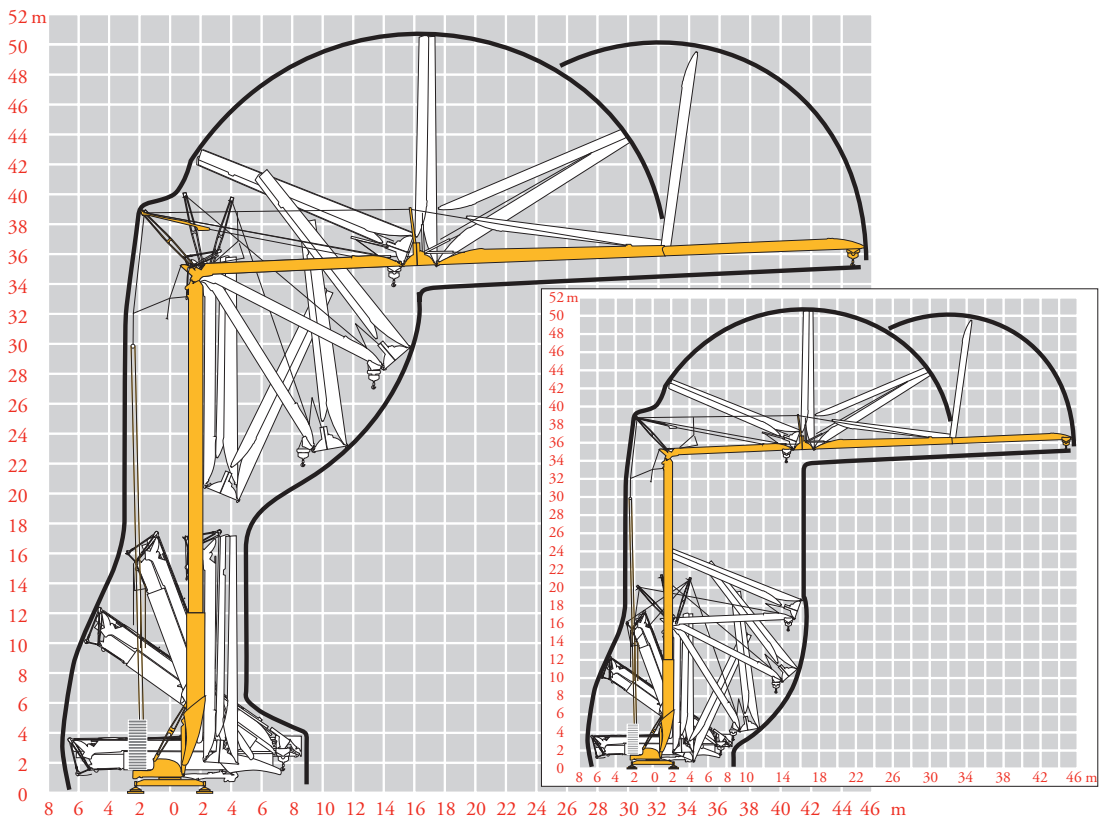
		U					UU					ch-PS hp	kW	
⬆	20 LVF 15 Optima	m/min	3,2	16	27	54	65	1,6	8	13,5	27	32,5	20	15
		kg	3000	3000	3000	1500	750	6000	6000	6000	3000	1500		
⬆	5 DVF 5	m/min	15 - 30 - 55 (0 → 2000 kg) - 15 - 30 - 40 (2000 → 6000 kg)										5,5	4
⬆	RVF 51 Optima +	α/min U/min - rpm	0 → 0,8										5,5	4
⬆	TVF 324	m/min	25										2 x 4	2 x 3
IEC 60204-32						kVA								
400 V (+10% -10%) 50 Hz						20 LVF 15 : 31 kVA								
480 V (+6% -10%) 60 Hz						20 LVF 15 : 31 kVA								

20 LVF 15 Optima



Montage
Montage
Erection
Montaje
Montaggio
Montagem
Монтаж

MEM 3



FR

- ⬆ Levage
- ⬆ Distribution
- ⬆ Orientation
- ⬆ Translation
- i Nous consulter

DE

- Heben
- Katzfahren
- Schwenken
- Kranfahren
- Auf Anfrage

EN

- Hoisting
- Trolleying
- Slewing
- Travelling
- Consult us

ES

- Elevación
- Distribución
- Orientación
- Traslación
- Consultarnos

IT

- Sollevamento
- Distribuzione
- Rotazione
- Traslazione
- Consultateci

PT

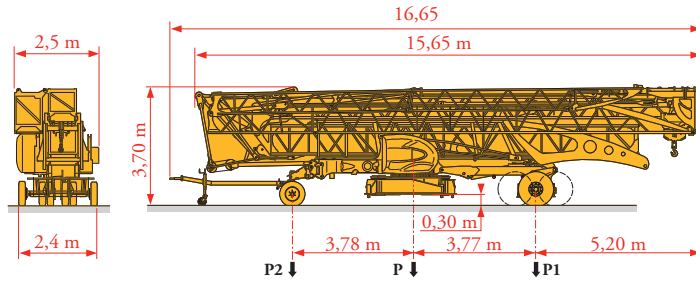
- Elevação
- Distribuição
- Rotação
- Translação
- Consultar-nos

RU

- Подъем
- Перемещение каретки
- Поворот
- Перемещение крана
- Проконсультируйтесь у нас

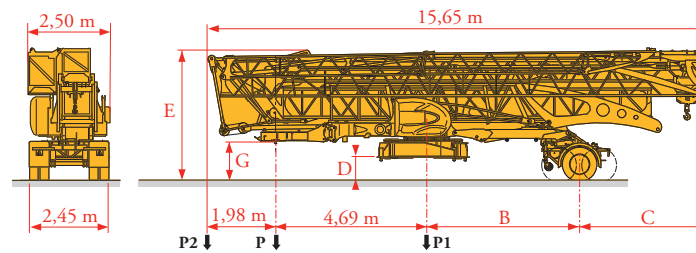
Transport
Transport
Transport
Transporte
Trasporto
Transporte
Транспортировка

MEM 4



	Km/h	P (kg)	P1 (kg)	P2 (kg)
DJ100/S120	10	19360	11491	7869
DJ105/S125	25	19650	11701	7949

... **



	Km/h	B (m)	C (m)	D (m)	E (m)	G (m)	P (kg)	P1 (kg)	P2 (kg)
SL121/J135	25	4,20	4,78	0,70	4,10	1,30	20200	12800	7400
SL122/J215M	80	3,21	5,77	0,60	4,00	1,20	21050	15075	5975

... **

FR

**

Voir documentations techniques.

DE

Siehe technische Dokumentation.

EN

See technical documentations.

ES

Consulte la documentación técnica.

IT

Vedere la documentazione tecnica.

PT

Consultar documentações técnicas.

RU

см. техническую документацию



Document commercial non contractuel. Pour toute information technique se référer à la notice correspondante.

Unverbindliches Vertriebsdokument. Für technische Informationen, siehe die entsprechenden Anweisungen.

This commercial document is not legally binding. For any technical information, please refer to the corresponding instructions.

Documento commercial no contractual. Para cualquier información técnica, ver la noticia correspondiente.

Documento commerciale non vincolante, per tutte le informazioni tecniche fare riferimento al catalogo istruzioni.

Documento comercial não contratual. Para qualquer informação técnica complementar consultar as respectivas instruções.

Этот коммерческий документ не является юридически обязательным. Для получения технической информации, см. соответствующие инструкции.

Manitowoc - Americas - World Headquarters
2400 S. 44th Street • Manitowoc • WI 54220 USA
Tel: +1 920 684 4410 • Fax: +1 920 652 9778

Manitowoc - Europe, Middle East & Africa
Ecully, France
18, rue de Charbonnières B.P. 173 • 69132 ECULLY Cedex • FRANCE
Tel: +33 (0)4 72 18 20 20 • Fax: +33 (0)4 72 18 20 00

Manitowoc - Asia Pacific
16F Xu Hui Yuan Building,
1089 Zhongshan No.2 Road (S) • Shanghai 200030 China
Tel: +86 21 6457 0066 • Fax: +86 21 6457 4955

REF. 200711 MEM 6